

IMPORTANT!

It is crucial to turn off the power to the circuit prior to commencing any installation work. In certain nations, installation work related to electricity may solely be performed by an authorized electrical contractor. For guidance, reach out to your local electricity authority.

NORDIC TALES BRIGHT MODECO

c-tales.com for more
formation or contact
ce@nordic-tales.com

NORDIC TALES
TOP FLOOR
BRAMMERSGADE 6
AARHUS
DENMARK



NORDIC TALES
SCANDINAVIAN DESIGN TRADITIONS

BRIGHT MODECO XL

BRIGHT MODECO XL GLASS PENDANT

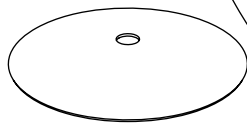
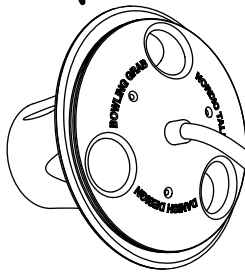
IN THE BOX

Silicone
Cap

Metal
Lid

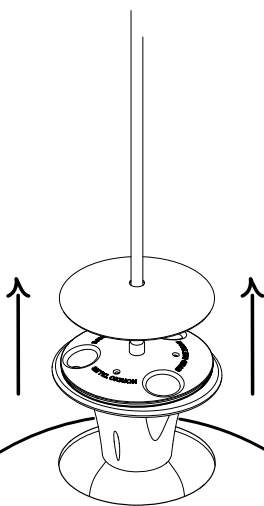
IMPORTANT!

No ceiling system
is included with this
pendant. For more
information visit
nordic-tales.com



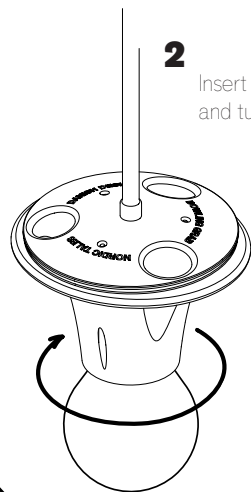
Cord

Glass
Shade



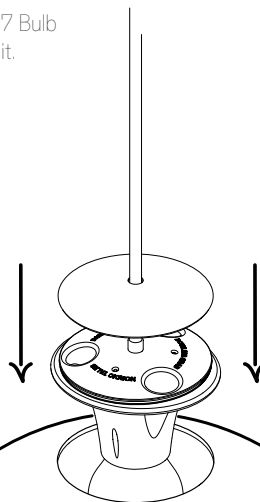
1

Remove the silicone
cap by grabbing it
like a bowling ball.



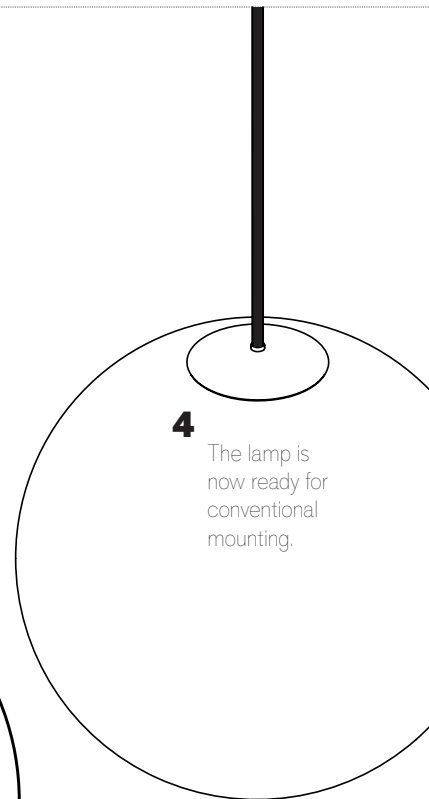
2

Insert E27 Bulb
and turn it.



3

Reinsert silicone
cap and position
metal lid.



4

The lamp is
now ready for
conventional
mounting.

220-240V-50Hz. E27
Max 10 Watt (LED)

Please visit Nordic-tales.com for more
technical information or contact
customerservice@nordic-tales.com