

ONO FLUSH MOUNT

- GENERAL INFORMATION -

TECHNICAL DATA

This product is fitted with a E14 bulb fitting. HAY recommends using this product only with LED bulbs.

FITTING TYPE | LED E14
POWER (W) | MAX. 8W
COLOUR TEMPERATURE | Warm white

HAY will not accept any responsibility for any accidents, injuries or damages that occur due to the use of incorrect bulbs.

ATTENTION

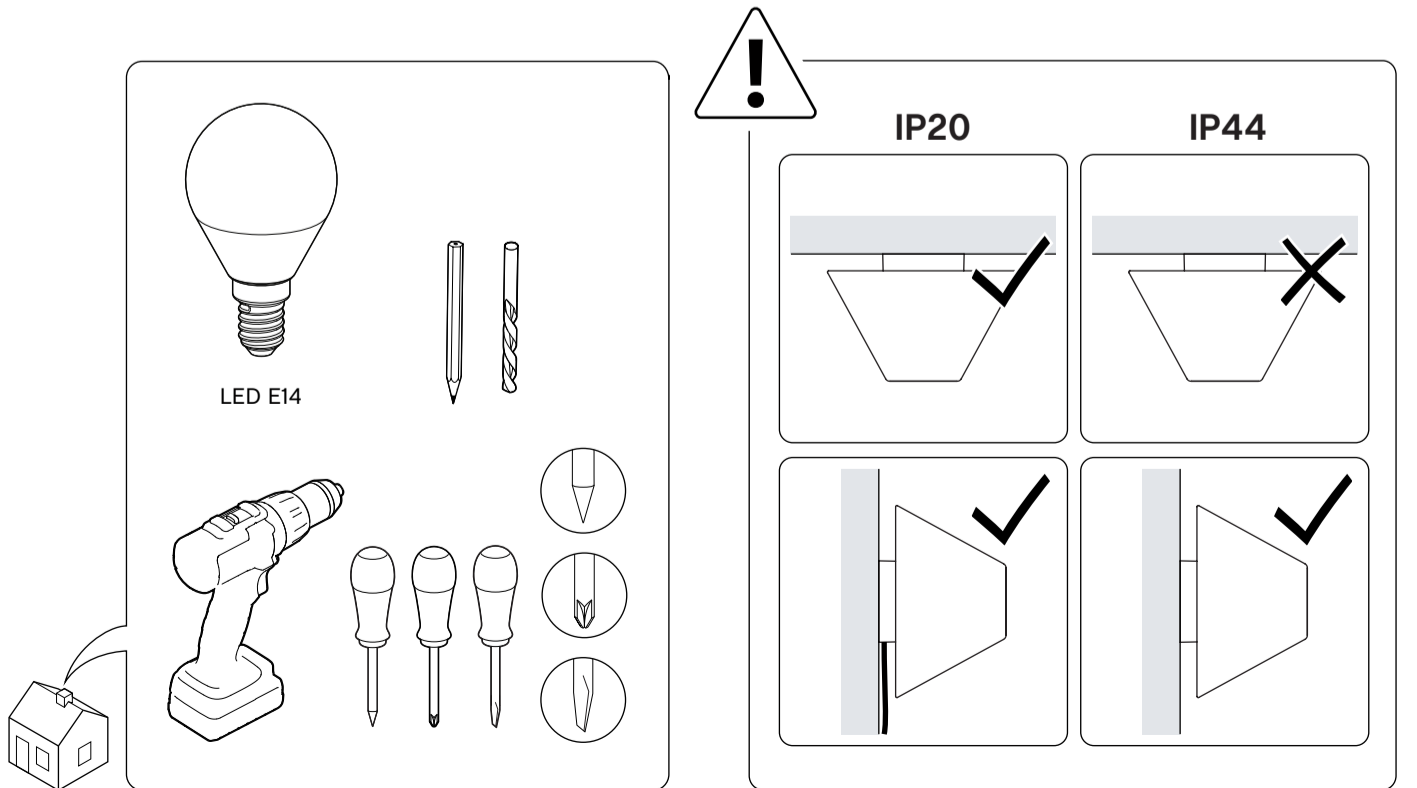
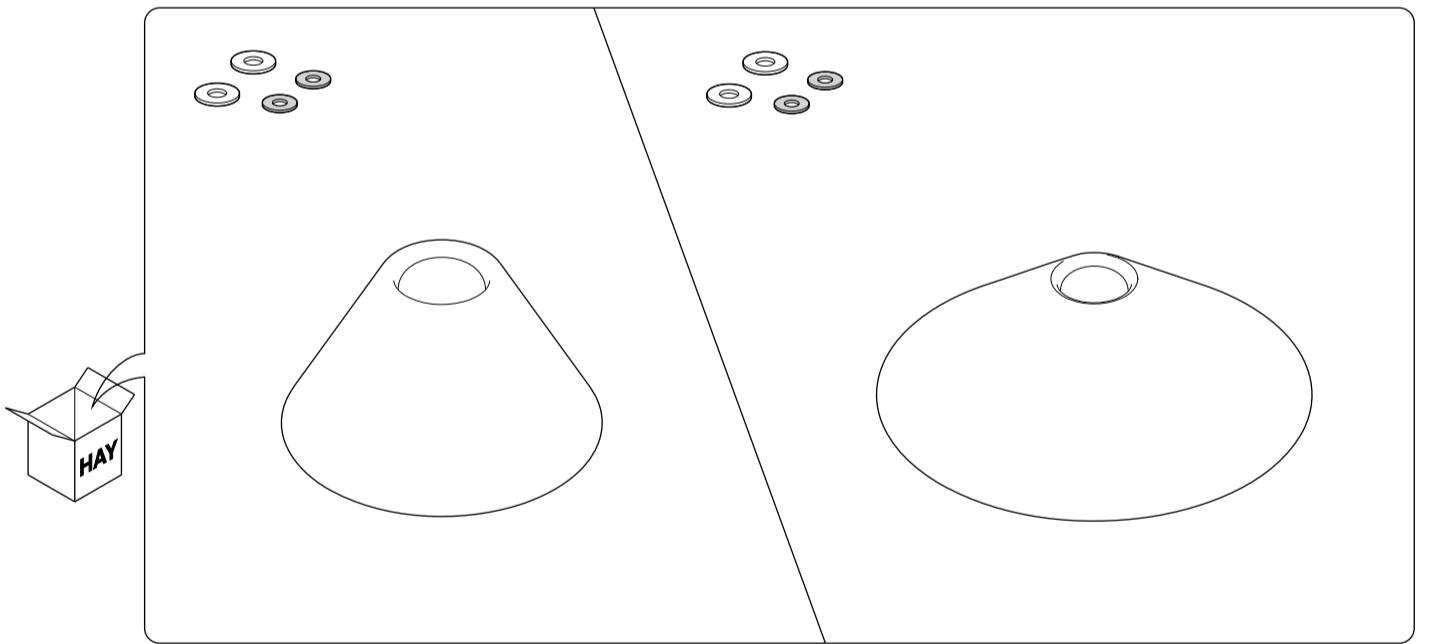
Ensure that the power supply to the circuit has clearly been turned OFF before installing the product. In some countries, electrical installation must be carried out by authorised electricians/contractors; please check with your local authority for guidance.

As wall materials vary, screws for wall fixation are not included. For advice on a suitable screw system for your wall, contact your local specialised dealer. Wall fixing/hanging must be carried out by a qualified person, since wrong fixation may cause injury or damage.

If used with an external flexible cable or cord longer than 30 cm, the flexible wiring connected to this luminaire shall be effectively fixed to the wall if the wiring is within arm's reach to reduce the risk of strangulation.

The product must not be modified in any way. HAY accepts no responsibility for any products that have been modified or tampered with. If the external flexible cable or cord of this luminaire is damaged, it should be exclusively replaced by a qualified electrician in order to avoid an electrical hazard.

- The Ono Flush Mount is designed to be used with LED based light sources only.
- Halogen or incandescent light sources should never be used, as they may cause damage to the lamp.



You can also find the same information at hay.dk/downloads
Mount by scanning the QR code
You can find more relevant information on Ono Flush



Please find our Care & Maintenance guide by scanning the QR code



The product can be cleaned with a soft damp cloth and mild detergent, or a dry microfibre cloth. Do not use alcohol or any other solvents to clean the product and avoid using abrasive or rough sponges. Ensure that the power supply has been turned OFF before cleaning the product.

Our Care & Maintenance offers guidance for optimal maintenance of your HAY product. It includes advice and instructions on cleaning and caring for specific materials to prolong the life of your lighting.

- CARE & MAINTENANCE -

